



# The Ream Report

The latest on all things Kitchens, Bathrooms, Bedrooms, Home Living and Appliances from Ream Interiors...



## A fresh start

The start of a new year is the perfect time to think about new home improvement projects. Maybe you felt as if your kitchen could work slightly better for you after hosting Christmas, or that your guest bedroom could do with some more storage for when the family come to stay.

Our designers at Ream are already bursting with ideas about how your home could work better for you!

Give us a call on 01634 799 910, or email us at [design@ream.co.uk](mailto:design@ream.co.uk) to speak with one of our designers.

Scan me to  
contact us!



### In This Issue

**INTERIOR OF THE MONTH-**  
Mr & Mrs Philalithis' stunning, sophisticated handleless kitchen with a statement island; a room to be envied!

**COOK YOUR WAY INTO 2022-**  
Your chance to win a Good Housekeeping Cookery Book! Head to pg.13 for more information.

**EX-DISPLAY OFFERS-**  
Ex-display interior furniture, ready to be installed in your home at a fraction of the price.

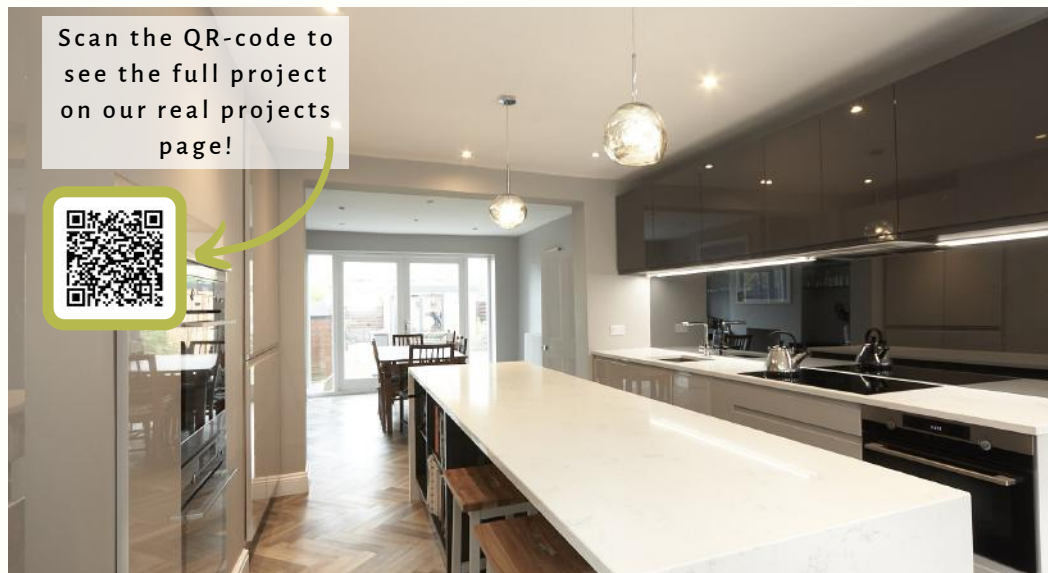
**DESIGNER DISCUSSIONS -**  
2022 Kitchen trends and how you can work them into your home.

# Interior Of The Month!

## Mr & Mrs Philalithis

Mr and Mrs Philalithis bought a Ream kitchen 17-years ago. They loved the quality of the design but felt it was no longer working for their family lifestyle and also felt the aesthetic needed modernising. They decided to reconnect with our fantastic team once more, to create a new interior that would capture the essence of their evolved style and family life.

Bespoke benches beneath the window transform the space both in terms of looks and functionality. The huge island is used regularly for breakfast and by Mr & Mrs Philalithis' son to finish his homework whilst chatting to them about his day at school as they cook. Having these additional social areas has helped round off this space for Mr & Mrs Philalithis and they now have a room the whole family can use and enjoy.





“*Mr & Mrs Philalithis wanted an open family space. The huge island allows their children to do homework whilst they cook away. Adding seating under the window has also made great use of the space!*”  
*Lara Kerlake, Designer*

### Fancy your project being featured?

We would love to showcase your projects in our next issue. Simply send your images and project details over to [marketing@ream.co.uk](mailto:marketing@ream.co.uk), or contact us to arrange a *free* professional photoshoot.

Every entry which is sent in and featured will win you a brand new set of AEG pans! We look forward to seeing all your fabulous transformations.

# Designer Discussions

Your monthly feature from our expert designers

## 2022 Kitchen Trends

Over the past two years, we have all spent a lot more time at home than usual. The importance of a kitchen that works for us has become paramount, especially during times when eating out or at friends was not an option. From baking sweet treats from videos we saw on social media to attempting our restaurant favourites, our kitchen has seen it all in the many months where home was the best place to be!



As 2022 is a hopeful new start, we decided it would be the perfect time to put together a little overview of what kitchen trends are up and coming for the year ahead.

### Natural Light

Bi-fold doors, statement size windows and ceiling lanterns are a great way to brighten your kitchen without adding spotlights. Although ambience can also be created with artificial lighting, bringing the 'outdoors in' has become extremely popular over the past 12 months. Allowing a large amount of natural light into a room also works well against the natural materials in your kitchen such as wood or stone.

### Pet Friendly

For those who consider their dog their best friend or even part of the family, you can now create them a perfect spot in your home.

Introducing a pet to the family has become much easier as working from home became the 'norm', which in turn gives us more time to dedicate to our furry friends!





Features for your pets needn't be hidden from visitors; now they can be the part you want to show off. And as the kitchen is the heart of the home, it is only fair that your pets have their own space! You can use unclaimed areas such as the plinth to create a suitable pull-out food station, or if you have the opportunity to sacrifice a cupboard for a cosy sleep space then this is also a great option! For those mucky pups, a large low sink with a showerhead for muddy paws can be the perfect addition to your home interior.

### **New Integrated handles:**

The Outline range of doors from Second Nature puts a new twist on the handleless kitchen. The new Outline range was created following extensive research and development. Subtly sculpted into the door itself and with a choice of different coloured backplates including timber, walnut, and metallic options such as brushed brass and copper, this new range will definitely catch your eye.

### **Green, Green, and Green:**

The use of colour in your kitchen can be a great addition! The use of greens, from tonal sage to statement forest has become increasingly popular for a kitchen. One reason is due to the meanings associated with the colour, including nature, life and seasonal changes. Another reason we have seen a rise in the popularity of this colour is due to people craving the outdoors and nature during the pandemic, with us wanting to bring nature and the fresh outdoors into our home.

For more trend and design knowledge, contact one of our designers today who will be over the moon to help! Either email us at [design@ream.co.uk](mailto:design@ream.co.uk) or give us a call on 01634 799 910.

By Ella  
Trainee Designer  
REAM INTERIORS



# In The Know...

## The New 'Outline' Door Range

A brand new collection from Second Nature; the stunning Outline collection features an array of door styles, all evolved from their existing door family with a unique, stylish twist.

The doors have four integrated handle options. Portal, which is a circular, elegant shape that works perfectly well with a modern door. Edge, which is subtly sculpted into the perimeter of the door, looks extremely sleek. Channel, which is the rectangular sophisticated integrated handle. And lastly, the extended channel, which is a streamlined, wider handle that is perfect on pan drawers.

A great feature of the outline doors is that for each handle you can choose a colour for the backplate. From traditional oak, walnut to sleek carbon or metallic finishes such as brass and copper, there is an option for every kitchen style.

This fabulous new range will be in our showroom in the coming weeks for you to come and have a look at. We can't wait!



## Did you know we can change your old appliances?

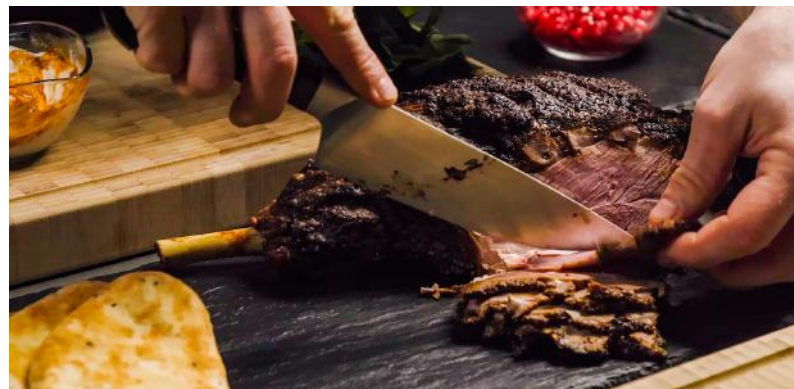
In any loved kitchen, there will be appliances that will become dated. We know replacing them can be a bit of a chore so we are going to make this easy for you!

If you have previously bought a kitchen with us, we can easily find your old project and recommend new ones to suit both your needs and kitchen style. Give us a call to find out more!

# Cook it with **AEG**

Impressive Moroccan lamb with harissa yoghurt

- Perfect dinner dish!
- Resting time: 30 mins
- Serves 8-10



## ingredients

- 1 x boned leg of lamb
- 50g Ras El Hanout
- Maldon salt
- Cracked black pepper
- Vegetable oil
- Pomegranate seeds
- Fresh mint tips
- 100ml greek yoghurt
- 50ml Harissa paste

## directions

- Mix the Ras El Hanout with a little vegetable oil to make a paste.
- Slash the lamb in 3-4 places to increase the surface area. Rub the spice paste all over the lamb. You could cover and marinate your lamb overnight in the fridge at this point for a deeper flavour.
- Season with salt and pepper.
- Place the SenseCook probe into the thickest part of the lamb and set the temperature to 56°C. Set the oven to 190°C and roast until 56°C has been achieved.
- Cover and set aside to rest for 30 minutes.
- When you are ready to serve, scatter the scored lamb with pomegranate seeds and mint tips.
- Ripple the Harissa paste through the yoghurt and serve with flatbreads and salad leaves or mixed vegetable cous cous.

Scan me to watch  
a how to video



# Cook it with **AEG**



The berry-good raspberry tart!

- Cooking time: 20-25 mins
- Serves 8
- Perfect for the family



## ingredients

- 1 x Sheet ready rolled shortcrust pastry
- Jar of quality raspberry jam
- 170g Butter
- 170g Caster sugar
- 170g Self-raising flour
- 3 Eggs (beaten together)
- 18-20 Raspberries
- 50g Dark chocolate for melting/drizzling
- Flaked Almonds

Scan me to watch  
a how to video



## directions

- Line the baking tray with the pastry and chill.
- Cream together the butter and sugar, then add the eggs slowly mixing all the time. Combine the flour to create a cake mixture.
- Cover the base of the pastry with jam, then spread the cake mixture over the top.
- Dot raspberries across the top and sprinkle with almonds if desired.
- Bake on SteamBake or Low Humidity at 180 degrees for 20-25 minutes. Once cooked, cool on a rack.
- Melt chocolate directly in a pan on induction level 1 or 2 and drizzle over the cooled cake then serve.



# Ex-Display Offers

Prices too good to miss!

Discover some of our gorgeous ex-display products, ready to be installed in your home at a fraction of the price...

Due to the ever-evolving market that we operate in, we change our in-store displays regularly so that we can continue to show the most up to date trends and products as possible. Therefore, we're able to offer a wide range of ex-display products with huge savings compared to the full retail price.



**Back-Lit Bathroom Mirror -  
800mm wide  
WAS: £358.00  
NOW: £190.00**



## Bosch 60cm Box Chimney Cooker Hood

### Product details:

Item code : DWB64BC50B. Small dent in the front, can be seen in the images on the website.

More information can be found on our website.

### Price

**WAS: £256.00 NOW: £100.00**

## Vanilla and Olivewood Gloss Kitchen

### Product details:

Base units and wall units and appliances included.  
Delivery and removal are not included.  
Worktop is free and not included in the price  
More information can be found on our website.

### Price

**WAS: £10,070.00 NOW: £1999.00**



For more fantastic bargains visit our website [ream.co.uk/ex-display](http://ream.co.uk/ex-display).

## Aqata Quadrant Shower Enclosure

### Product details:

918mm x 918mm. 2 sliding doors. Dedicated shower tray with adjustable legs and panel.

More information can be found on our website.

### Price

WAS: £2200.00 NOW: £299.00



## Walnut Breakfast Bar with Downleg

### Product details:

Walnut seating breakfast bar with down leg : 100mm L x 600mm D x 80mm thick

More information can be found on our website.

### Price

WAS: £3000.00 NOW: £399.00

## Kitchen in Oak and Cornflower Blue

### Product details:

Base units, wall units and appliances included.

Delivery and removal not included.

Worktop is free and not included in price

More information can be found on our website.

### Price

WAS: £15,000.00 NOW: £3999.00



For more fantastic bargains visit our website [ream.co.uk/ex-display](http://ream.co.uk/ex-display).

# Meet The Team!



I'm known as the super hero here at Ream - I'm always on hand to help! I've been a kitchen fitter for 16 years and I still love being able to transform someone's room for them. With no two days being the same, I never get bored.

-Nick, Fitter

## In It To Win It ...

Leap into the New Year by cooking up a storm with the Good Housekeeping cookbook.

For your chance to win, email [marketing@ream.co.uk](mailto:marketing@ream.co.uk) quoting COOK2022 and your full name and contact number. Winners will be announced on Monday 31st January. Good luck!



## In February's Report...

- Designer Discussion: Utility rooms: how can they work for me?
- What's hot in the showroom? Our brand new presentation areas!
  - Your chance to win a NEFF pan set!
  - More fantastic ex-display offers
- Meet our Marketing Manager, Robyn!