

CRAFTED IN KENT

**REAM
INTERIORS**

EST. 1979

FROM OUR HOME TO YOURS

The Ream Report

The latest on all things Kitchens, Bathrooms, Bedrooms, Home Living and Appliances from Ream Interiors...



BBQs, Sunshine, and Home Transformations!

The warmth and vibrancy of August are upon us and summer is at its peak. The sunny days and balmy evenings invite us to embrace the season's delights fully. Whether it's enjoying BBQs in the garden or simply soaking in the Sun, August offers a perfect backdrop for making unforgettable memories.

As you relish your summer break and savour those outdoor gatherings, consider dedicating some time to your next home interior project. This could be the ideal moment to refresh your living space, turning it into a stylish sanctuary. With the weather still nice, it's a great opportunity to start on your house project and enjoy being outside while making improvements.

Reach out to us at 01634 799 910 or via email at design@ream.co.uk to connect with one of our designers. We look forward to discussing your ideas and helping you make the most of the exciting year ahead!

In This Issue

INTERIOR OF THE MONTH-
Mr & Mrs Weller's stunning dressing room of dreams.

SUMMER RECIPES!
NEFF's Colourful Carrot Tart with Ricotta & Caramel and hazelnut brittle cheesecake

EX-DISPLAY OFFERS-
Ex-display interior furniture, ready to be installed in your home at a fraction of the price.

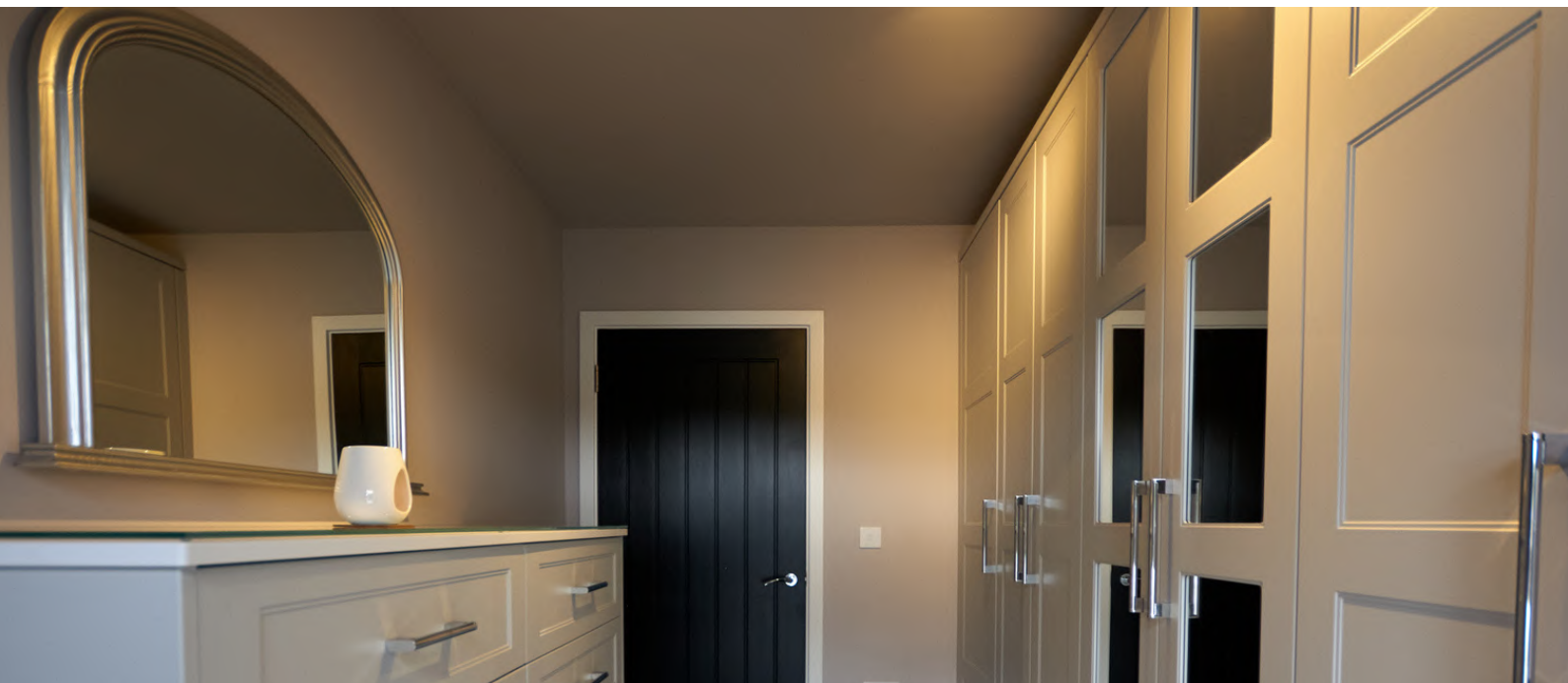
DESIGNER DISCUSSION!
Adding bespoke features to your dressing room

Interior Of The Month!

Mr & Mrs Weller

Mrs Weller wanted a sanctuary of style and sophistication for her dressing room. She decided on a serene palette of soft beiges and elegant greys, creating a calming atmosphere that enhances her daily routine.

The focal point of the dressing room is the bespoke wardrobes with doors from our Bella Aldridge range in supermatt dove grey, adorned with sleek mirrored doors to add a touch of glamour and enhance the sense of space. Our wardrobes provide ample storage, ensuring every item has its perfect place. The wardrobes have modern, chrome-finished handles that offer a stylish contrast to the soft tones of the doors, bringing a contemporary flair to the classic design.





Designer Discussions

Your monthly feature from our expert designers

Adding bespoke features to your dressing room

Creating a personalised dressing room is a luxurious way to enhance your home and daily routine. You can tailor every aspect to fit your style and needs with bespoke options. Here are some of the top features to consider:

Mirrored Wardrobe Doors

Mirrored wardrobe doors are a classic choice that serves both aesthetic and functional purposes. They create an illusion of more space, add light, and provide a convenient full-length mirror for outfit checks. You can opt for various styles, such as floor-to-ceiling mirrors, beveled edges, or even antique finishes to match your design theme.



Sliding Doors

Sliding doors are perfect for a sleek, modern look. They save space compared to traditional hinged doors and can be customised with different materials like frosted glass, wood, or mirrored panels. Sliding doors are ideal for both small and large dressing rooms, providing easy access without taking up extra room.

Pull-Out Cupboards

Maximise your storage with pull-out cupboards. These are great for organising accessories, such as ties, belts, and jewelry. Pull-out cupboards can be fitted with dividers and trays to keep everything neatly arranged. Soft-close mechanisms ensure a quiet and smooth operation.

Shoe Shelving

A dedicated shoe shelving system is a must for any shoe enthusiast. Adjustable shelves allow you to accommodate various shoe sizes and styles, from high heels to boots. Incorporate pull-out shoe racks or angled shelves to display your collection stylishly while making it easy to find the perfect pair.





Dresser Drawers

Dresser drawers in your dressing room offer additional storage for items like undergarments, socks, and folded clothes. Customisable drawer dividers can help keep everything organised. Choose from a range of materials and finishes to match the overall aesthetic of your dressing room.

Different Height Shelves

Incorporating shelves at various heights provides versatility in storage options. Higher shelves can be used for items you don't need daily, like seasonal clothing, while lower shelves keep frequently used items within easy reach. Adjustable shelves offer the flexibility to change configurations as your needs evolve.

Built-in Vanity

A built-in vanity is a luxurious addition that can elevate your dressing room. It provides a dedicated space for grooming, applying makeup, or styling hair. Include drawers for cosmetics, a comfortable stool, and adequate lighting for a complete vanity setup.

Island Storage

If space allows, an island in the centre of your dressing room can be both functional and stylish. It offers additional storage for accessories, jewellery, and folded clothes. Top it with a countertop material like marble or quartz for a luxurious touch. Drawers, pull-out trays, and even a glass display top can showcase your favourite items.

Lighting Solutions

Good lighting is essential in a dressing room. Incorporate a mix of ambient, task, and accent lighting. LED strip lights inside wardrobes, under-shelf lighting, and elegant chandeliers or pendant lights can create a well-lit and inviting space. Consider smart lighting options that allow you to adjust the brightness and colour temperature.

Seating Options

Comfortable seating can make your dressing room more inviting and functional. A plush bench, an elegant armchair, or an ottoman provides a place to sit while putting on shoes or contemplating outfit choices. Choose materials and styles that complement the overall design of your dressing room.

Our friendly and knowledgeable team would be happy to help with any more questions you may have. Call our showroom on 01634 799 910 or email us at design@ream.co.uk.

By Lucy
Kitchen Designer
REAM INTERIORS





Colourful Carrot Tart with Ricotta

- Prep time: 15 mins
- Cooking time: 60 mins
- Serves: 4



ingredients

- 1 kg mixed carrots
- 1 puff pastry sheet
- 1 lemon
- 1 shallot
- 1 tbsp butter
- 2 tbsp maple syrup
- 1 tsp chili flakes
- 250 g ricotta cheese
- 20 g pine nuts
- 15 g dill
- 1 bundle parsley
- salt
- pepper
- oil (for frying)

directions

- Preheat the oven to 200° CircoTherm®. Halve or quarter carrots lengthwise, depending on thickness. Zest the lemon and then cut it in half. Slice shallot into fine rings.
- Heat some oil in a large frying pan and sauté carrots for approx. 10 minutes. Then add shallot rings and fry for approx. 3 more minutes. Then deglaze the pan content with juice of half a lemon. Then add butter, maple syrup, and chili flakes. Simmer for approx. 3–5 minutes. until carrots are glazed.
- In a small bowl, mix the ricotta with the lemon zest. Season with salt and pepper to taste. Roll out the puff pastry onto a baking sheet lined with parchment paper and spread with the ricotta.
- Spread carrots in a single layer on top of the ricotta. Choose Added Steam Intensity Level 2 and Bake the tart in the oven for approx. 5 minutes with Added Steam to puff up the pastry, then continue baking for approx. 10 minutes, until the tart is golden brown and the carrots are soft enough. Then spread the pine nuts over the tart and bake for approx. another 5–8 minutes. or until the nuts turn golden brown at the end of the baking time.
- In the meantime, coarsely chop the dill and parsley. Remove the tart from the oven and garnish with chopped herbs. Slice it up and enjoy!

Cook it with NEFF

Caramel and hazelnut brittle cheesecake

- Prep time: 60 mins
- Cooking time: 30 mins
- Serves: 6



ingredients

HAZELNUT BRITTLE

- 100g hazelnuts
- 100g caster sugar
- CARAMEL SAUCE
- 200g caster sugar
- 90g unsalted butter, cut into small cubes
- 120 ml double cream
- ¼ tsp salt

BISCUIT BASE

- 170g digestive biscuits
- 80g unsalted butter, melted
- CREAM CHEESE TOPPING
- 400g cream cheese
- 30g caster sugar
- 250g double cream

directions

Hazelnut Brittle

- Line a baking tray with baking paper and rub a few drops of oil on it.
- Heat sugar in a pan (avoid non-stick) on low until golden caramel.
- Add hazelnuts and pour onto the baking sheet. Let it cool.
- Break into small pieces and blitz to a coarse brittle. Store in an airtight box for up to a week.

Caramel Sauce:

- Heat sugar in a pan until golden, then add butter and mix for 2 minutes.
- Slowly add cream, stirring continuously until combined. Add salt and mix well.
- Pour into a jar and let it cool. Store in the fridge for up to 2 weeks. Reheat in the microwave if it sets.

Cheesecake Base:

- Grease an 8-inch springform tin and line with baking paper.
- Crush biscuits in a zip lock bag and mix with melted butter.
- Press into the tin and chill in the fridge for 30 minutes.
- Cream Cheese Topping:
- Beat cream cheese and sugar until smooth. Add double cream and beat until slightly thickened.
- Fold in 4 tbsp of caramel sauce and 4 tbsp of brittle.
- Pour half over the biscuit base. Drizzle 4-5 tbsp of caramel sauce and sprinkle 4-5 tbsp of brittle. Pour the remaining cheese mix on top.

Finish:

- Drizzle caramel sauce and sprinkle brittle on top.
- Chill in the fridge overnight and serve cold.

Ex-Display Offers

Prices too
good to miss!

Discover some of our gorgeous ex-display products, ready to be installed in your home at a fraction of the price...

Due to the ever-evolving market that we operate in, we change our in-store displays regularly so that we can continue to show the most up-to-date trends and products possible. Therefore, we're able to offer a wide range of ex-display products with huge savings compared to the full retail price.



NEFF Built In Fridge-Freezer

Product details:

1772.0 x 541.0 x 545.0 mm

More information can be found on our website.

Price

WAS: £750.00 NOW: £400.00

Crosswater Artist Basin unit & Nepi Round Inset basin

Product details:

Onyx Black with Solid Oak worktop and Oak legs.

More information can be found on our website.

Price

WAS: £2235.00 NOW: £950.00



BOSCH SMD6ZCX60G Fully Integrated Dishwasher

Product details:

13 place settings

Cutlery holder tray type

Noise level 44dB (human voice is 60dB)

H81.5 x W60 x D55cm

More information can be found on our website.

Price

WAS: £1200.00 NOW: £967.00

STAR
BUY

TOO GOOD TO MISS!

AEG KDK911423M Sous Vide Drawer

Product details:

AEG integrated vacuum sealer drawer.

72x408x276

More information can be found on our website.

Price

WAS: £1800.00 NOW: £1000.00



Allure 700mm Illuminated Cabinet

Product details:

Crosswater Allure 700mm Illuminated Cabinet with Sensor Switch

More information can be found on our website.

Price

WAS: £980.00 NOW: £250.00



For more fantastic bargains visit our website ream.co.uk/ex-display.

Meet The Team!



Working as a warehouse operative and being part of the Ream team is such a rewarding experience. I thoroughly enjoy interacting with everyone I meet along the way, and tuning in to daytime radio adds an extra layer of enjoyment to my journey! Delivering our clients' stunning new interiors brings a sense of accomplishment that makes each day fulfilling. -Dean, Warehouse Operative.

In September's Report...

- NEFF's back to school recipes
- Another stunning interior of the month
 - More fantastic ex-display offers
- Meet more of our wonderful team...

