



The Ream Report

The latest on all things Kitchens, Bathrooms, Bedrooms, Home Living and Appliances from Ream Interiors...



It's The Season To Be Jolly!

As the holiday season approaches and the year draws to a close, we want to express our heartfelt gratitude for the ongoing support of all our customers. It's been another year of brilliant new interiors in homes all over Kent, and we truly appreciate your trust in us.

Looking ahead, we're excited about the opportunities the new year will bring and the amazing projects we'll work on in 2025. We hope this festive season brings you joy, laughter, and quality time with loved ones. May the new year bring you happiness, positivity, and success in all you do.

Merry Christmas and Happy New Year from Ream!

In This Issue

INTERIOR OF THE MONTH-
Mr and Mrs Measey's warm and inviting shaker-style kitchen.

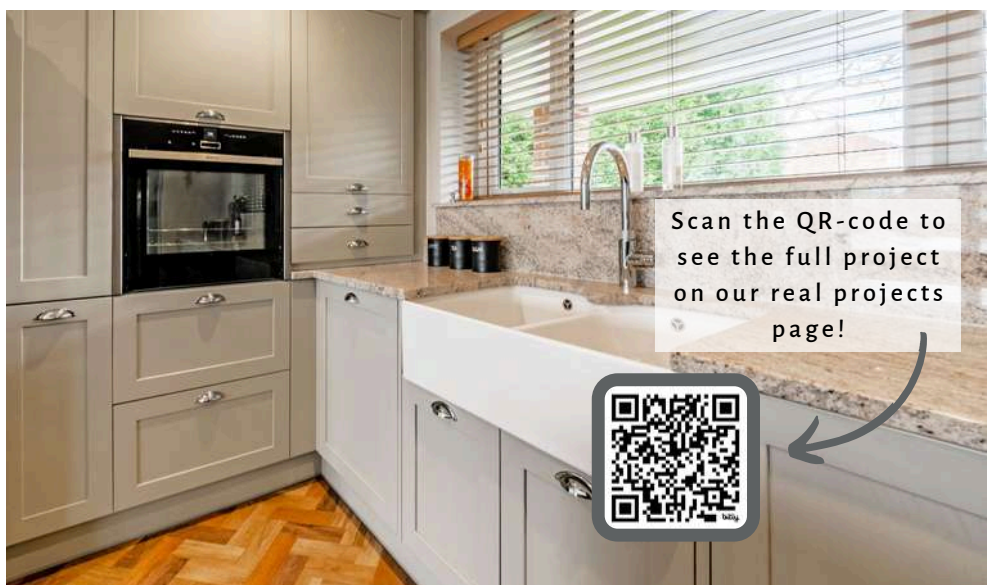
DESIGNER DISCUSSIONS-
Bringing your monthly feature, focusing on creating a perfect holiday-ready kitchen, for festive cooking and gatherings.

INSPIRATION GALLERY-
Features a collection of impressive and practical bedrooms to help you create your perfect retreat!

Interior Of The Month!

Mr and Mrs Measey recently renovated their home and wanted to maximise every inch of their new kitchen. The design strikes a perfect balance of style and practicality, featuring the elegant Aldana door range in stone and dust grey. The layout is designed for smooth flow, with a central island as the focal point. Made from rich walnut wood and granite, the island offers a warm contrast and a perfect spot for casual dining. Its tones blend seamlessly with the herringbone flooring, creating a cohesive space.

Modern appliances, including a White V&B farmhouse sink and a Quooker Flex pro3 tap, enhance both functionality and style. The tap's instant boiling water and flexible hose add convenience. Carefully selected soft-close mechanisms and distinctive cup pull handles contribute to the kitchen's aesthetic and function. These finishing touches provide luxury and tactile appeal, complementing the cabinetry and emphasising the kitchen's modern elegance—creating a space for both cooking and lasting memories.



Scan the QR-code to see the full project on our real projects page!





Fancy your project
being featured?

We would love to showcase your project in our next issue. Simply send your images and project details over to marketing@ream.co.uk, or contact us to arrange a *free* professional photoshoot. We look forward to seeing all your fabulous transformations.

Designer Discussions

Your Monthly Feature From Our Expert Designers

Is Your Kitchen Ready For Christmas Dinner?

Kitchens are often considered as heart of the home, and as such, they must be both aesthetically pleasing and well-designed. A thoughtfully crafted kitchen not only enhances the overall atmosphere of the home, but also contributes to its functionality. Balancing style with practicality is key, ensuring that the kitchen remains as functional as it is visually appealing.



Smart Storage Solutions

Smart storage solutions are crucial to maximising space and improving the functionality of any kitchen, especially during the holiday season when the kitchen is often at its busiest. With Christmas comes an abundance of cookware, baking tools and extra ingredients for preparing festive meals. Efficient storage options, such as pull-out drawers, adjustable shelves, and under-counter compartments, help keep everything coordinated and easily accessible. These solutions not only prevent clutter but also provide the extra space needed for hosting gatherings, cooking large meals, and storing leftovers.

Innovative Lighting Solutions

Innovative lighting solutions are essential for creating ambiance and functionality in the kitchen. Under-cabinet lighting, smart controls, and accent lights enhance holiday decorations, making meal prep and entertaining easier while adding festive charm.

Hidden Appliances and Features

Hidden appliances and features are important because they create a streamlined, clutter-free kitchen while maximizing space and maintaining a sleek, modern aesthetic.





A Great Layout

When it comes to efficiency, layout is everything. The kitchen triangle focuses on the optimal placement of the three most-used areas: the sink, the hob (or cooker), and the fridge. By positioning these key elements in a triangular layout, you can minimize unnecessary movement, making cooking and food preparation smoother and more efficient.

The kitchen triangle works because it ensures that everything you need is within easy reach. Whether you're rinsing vegetables, moving to the hob to cook, or grabbing ingredients from the fridge, this layout streamlines your workflow. By combining the kitchen triangle principle with thoughtful planning you can achieve a layout that looks and works beautifully.

Finishing Touches For The Festive Season

If you already have a cosy, comfortable kitchen that functions well year-round, now is the perfect time to enhance its practicality for the festive season. Consider adding extra storage options like pull-out drawers or shelves to keep holiday essentials arranged and within reach. Creating additional workspace can be as simple as clearing and optimizing counter space or adding a slim, wall-mounted prep table that folds away when not in use. To improve efficiency, install under-cabinet lighting for better visibility or upgrade to smart appliances that simplify cooking and clean-up. These thoughtful enhancements will ensure your kitchen runs smoothly, helping you manage the demands of holiday cooking and hosting with ease.



Inspiration Gallery

Transform your Bedroom



Ready to refresh your bedroom? A few key upgrades can completely transform your space, making it more functional, stylish, and relaxing. By incorporating fitted wardrobes, thoughtful lighting, and smart storage solutions, you can elevate the overall ambiance. Maintaining an orderly and clean room is essential for well-being—it can significantly improve mental health by reducing stress & anxiety, and promoting better sleep quality. Clutter not only creates a sense of chaos but can also be distracting, preventing you from being entirely at ease. Here are some simple yet effective upgrades that will help you easily maintain a structured and peaceful space.



Update Lighting

Thoughtful lighting solutions are essential for creating a comfortable and functional bedroom. Proper lighting sets the mood, promotes relaxation, and helps improve sleep quality. It also ensures that tasks like reading or getting ready are easy to accomplish. By incorporating adjustable or layered lighting, you can customise the atmosphere to suit different activities and enhance the room's visual appeal.



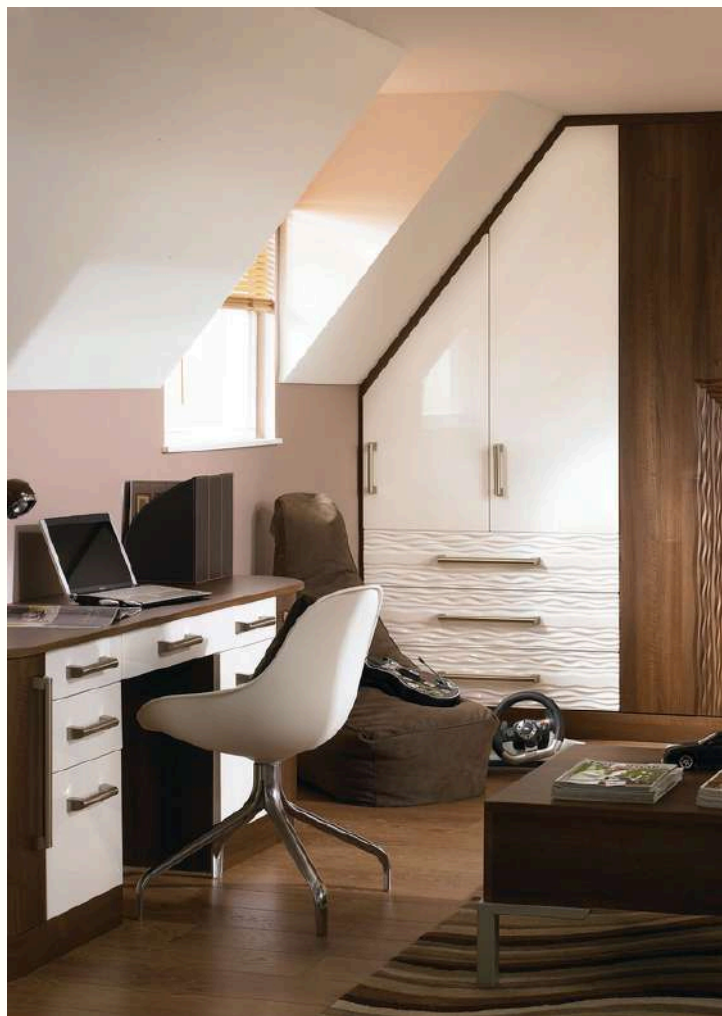
Built-In Wardrobe

A built-in wardrobe is an excellent way to transform your bedroom by maximising space and adding a sleek, seamless look. It offers custom storage solutions, helping to keep your clothes, accessories, and other items organised and easily accessible. Not only does it reduce clutter, but it also enhances the overall aesthetic of the room, making it feel more spacious and tidy.



Personalised Decor

Personalised decor is essential for transforming a room because it adds character and reflects your unique style. Incorporating elements like artwork, family photos, or meaningful objects creates a space that feels truly yours, making it more inviting and comfortable. Personalised decor also helps set the tone of the room, whether you're aiming for a cosy, artistic, or modern vibe, ensuring the space feels connected to your personality and lifestyle.



Smart Storage Solutions

Similar to a built in wardrobe, smart storage solutions are key to transforming a room by maximising space and reducing clutter. By incorporating furniture with built-in storage, such as beds with drawers or modular shelves, you can keep your room neat and functional. These solutions also make it easier to store items in a way that's both accessible and out of sight, creating a more relaxing, functional, and visually appealing environment.

*Head to our website for more
bedroom inspiration!*



Customer Testimonial

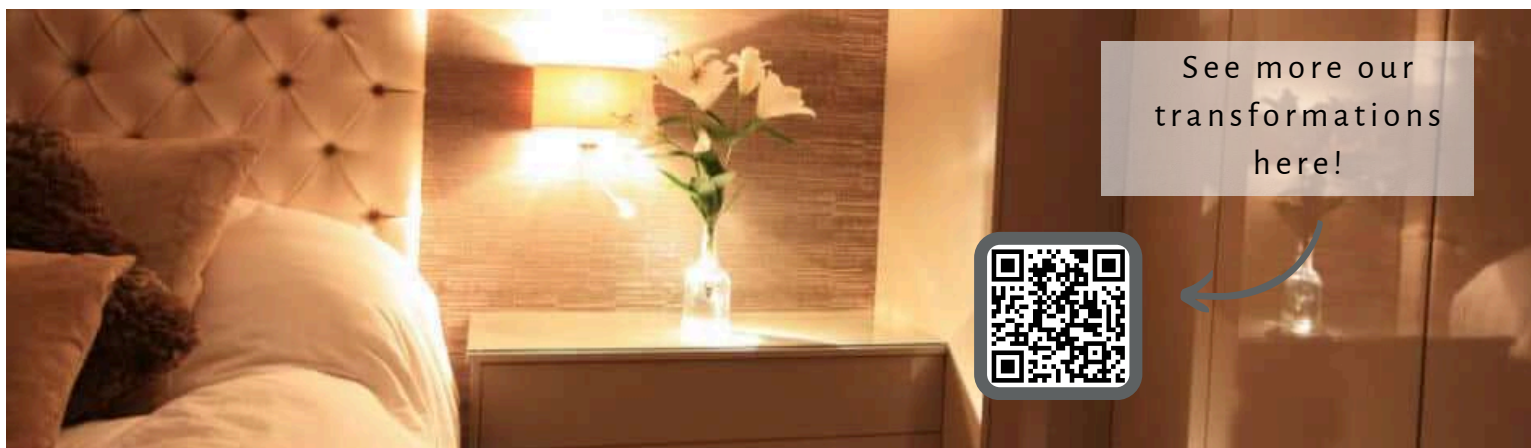
Transforming a Bedroom into a Luxury Sanctuary: The Briants' Bespoke Design Journey with Ream Interiors



When Mrs. Briant approached us, she had a clear vision for her bedroom: a luxury retreat that would serve as a sanctuary from the world, a boutique-style space designed with careful attention to detail and thoughtful storage solutions. Working closely with Paul, Ream's expert bedroom designer, the Briants' dream began to take shape.

From the very first consultation, Paul listened intently to Mrs. Briant's needs, offering expert guidance and recommendations to bring her vision to life. The brief was simple but ambitious – to create a calming, sophisticated bedroom with a mix of beautiful, high-end furniture and smart storage solutions.

The result was nothing short of stunning. Ream's in-house expert fitters meticulously installed the custom furniture, which featured clever pullouts, internal drawers, and space-saving solutions to organize Mr. and Mrs. Briant's belongings in a way that was both functional and elegant. The storage was seamlessly integrated, ensuring that the room remained uncluttered, with every item having its own place.



See more our transformations here!



What really set the space apart were the luxurious finishing touches. Mrs. Briant sourced her own handmade drop pendant lights, which hang gracefully above the bed, along with stylish wall lamps that provided soft, ambient lighting. The ceramic floor tiles and beautiful draping curtains added an extra layer of elegance, creating a serene atmosphere that perfectly aligned with the couple's vision.



The final result is a bedroom that combines luxury, comfort, and practicality – a true haven from the demands of everyday life. With Ream Interiors' expert design and installation, the Briants now have a space they can truly call their own, blending beautiful design with thoughtful functionality in a way that only Ream's expert team could deliver.



“A tranquil space for relaxing, finished off with some inspirational interior design touches – Paul, Designer”

Meet The Team!



“Designing bathrooms isn't just my job—it's my passion. I love working closely with my clients, understanding their vision, and transforming it into a space where they can truly unwind. For me, it's all about the little details that make a big difference. When I see the joy on their faces after the final installation, it reminds me why I do what I do.”
-Dan, Bathroom Designer

Skip the January rush...

Prepare now for a smooth start to the year!

Don't wait for the January rush - book your free design appointment now and get a head start on your 2025 project! The post-Christmas period can get hectic as everyone rushes to improve their homes. By securing your appointment early, you can begin transforming your space without the stress. Whether you're envisioning a cosy holiday retreat or a stylish refresh, our expert designers are ready to help bring your ideas to life. Schedule your appointment today and get ahead of the New Year's hustle!

The spirit of giving is upon us!

This Christmas, we will not be sending Christmas cards, however we are proud to support Gillingham Street Angels in their mission to assist the most vulnerable members of our community. This incredible organisation offers vital support, providing food (for both people and pets) and essential household items to those in need. By making a donation, you are helping us spread holiday cheer and support those who need it most this festive season. Join us in making a difference and bringing hope to those facing hardship this Christmas.



Scan Me To Donate



In January's Report...

- Designer Discussion
- What's hot in the showroom?
- AEG's Veganuary friendly recipes
- Fantastic ex-display offers



Opening Times

Wishing you a Merry Christmas & Happy New Year from all of the Ream Interiors team!

CLOSED

Thursday 19th December - Thursday 26th December

OPEN

Friday 27th December - Monday 30th December
9am to 5pm

CLOSED

New Year's Eve - New Year's Day

OPEN

Thursday 2nd January 9am-5pm

The installation department and factory will be closed from 5pm 18th December, and will not reopen till 8am 2nd January

We won't be available for deliveries from 4:30pm 18th Dec – 7:30 2nd January



@Reaminteriors



Ream Interiors



Design@Ream.co.uk