



# The Ream Report

The latest on all things Kitchens, Bathrooms, Bedrooms, Home Living and Appliances from Ream Interiors...



## Unwrap the Season

The festive season has arrived, and we want to send a heartfelt thank you to all our wonderful customers for your continued support this year. It's been a joy bringing new interiors to life across Kent, and we're excited for the projects 2026 will bring.

Get in touch on 01634 799 910 or [design@ream.co.uk](mailto:design@ream.co.uk) to speak with one of our design experts.

**Wishing you a Merry Christmas and a Happy New Year!**

*Scan here to contact us...*



### In This Issue

**VISIT OUR SHOWROOM -**  
Discover our decorated showroom, filled with festive cheer.

**INTERIOR OF THE MONTH -**  
Highlighting our most recent light-filled shaker kitchen.

**DESIGNER DISCUSSIONS -**  
Find out what we can learn about our kitchens at Christmas.

**INSPIRATION GALLERY -**  
A first look at the emerging kitchen trends shaping 2026!

**WHAT OUR CUSTOMERS SAY -**  
A look inside Mr & Mrs Booth's stylish Hempstead trendy kitchen.

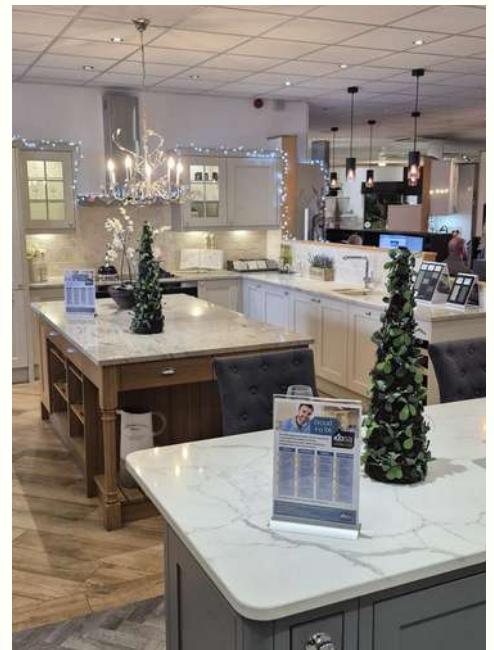
**COOK IT WITH AEG -**  
A festive leftovers special to keep the celebrations going.

**EX-DISPLAY -**  
Discover excellent savings on premium appliances!



# Visit Our Showroom...

We warmly invite you to visit our beautifully decorated showroom this month and enjoy a touch of Christmas spirit while you explore. The trees are sparkling, the lights are glowing, and the displays feel wonderfully festive. It is the perfect setting to gather inspiration for the new year and chat with our designers about any plans you have for your home. You can book your design appointment by [clicking here](#).



## Opening Times

Closed: 19th - 26th December

Open: 27th, 29th & 30th December  
9am - 5pm

Closed: 31st - 1st January

Reopening: 2nd January  
9am-5pm

\*The installation department and factory will be closed  
from 19th December till 2nd January.





# *Interior Of The Month!*

## **Light-Filled Shaker Kitchen with a Sociable Garden-Focused Design**

This uplifting family kitchen brings together everything a modern home needs at this time of year. The design blends classic Shaker styling with light-enhancing finishes and thoughtful details that encourage easy hosting and everyday comfort. The sociable island creates a natural place to gather while the layout flows seamlessly towards the garden, allowing the space to feel bright and connected throughout the seasons.

Soft greys, warm timber and subtle lighting bring a relaxed atmosphere that feels especially inviting on winter afternoons. Generous storage keeps worktops clear, and practical organisation makes festive cooking straightforward. This is a kitchen designed for real family life, shaped around connection, conversation and the joy of welcoming guests.

[Click here](#) to see the full project on our website.









## What Can We Learn About Our Kitchens at Christmas?

Christmas is the moment when our kitchens truly come into their own. With guests arriving, cooking in full swing, and the space alive from morning to night, we see clearly what works well and what feels a little stretched. The festive season highlights how our kitchens support real life as well as special occasions, and it often reveals where a small adjustment could make next year even smoother. If you notice anything you would like to refine before the season is over, our team is here to help, so please [get in touch](#).

### 1. The Importance of Flow & Movement

Christmas quickly shows us how essential good flow is within a kitchen. With several people helping at once, the layout needs to support smooth, natural movement so no one feels crowded or in the way. This is also when clever storage and well-planned cabinetry make a real difference.

Cabinets that open fully without blocking paths, drawers that glide smoothly even when loaded and storage that maximises every inch of space all help the kitchen feel organised and calm. When everything is easy to reach and nothing interrupts the flow, the room functions beautifully even during the busiest festive moments.

### 2. Lighting That Works From Dawn to Dusk

During winter, lighting plays an even greater role in shaping the atmosphere of the home. Kitchens need to feel bright and uplifting during the morning rush and warm and relaxing as the day winds down. Layered lighting creates flexibility that suits every moment.

Soft under-cabinet lighting, warm bulbs and well-placed feature lights all contribute to a space that feels both functional and inviting throughout the season, and a gentle touch of festive warmth, whether through subtle accent lighting or seasonal tones, can make the kitchen feel brighter and more cheerful in contrast to the dark, dull days outside.

If you would like tailored guidance on enhancing your lighting this season, speak to our expert team today, as it is often a quick and easy adjustment to make.







### 3. Storage That Simplifies the Festive Rush

Christmas shows us exactly how much we rely on smart storage. With extra food, cookware and serving dishes coming into play, clutter can build quickly. Deep drawers, hidden storage and organised pantry solutions help maintain order when the worktops begin to fill.

When items have a dedicated place, the kitchen remains calm and efficient, even with guests arriving and meals being prepared.



### 4. Seating That Brings Everyone Together

Some of the most memorable Christmas moments happen while people gather in the kitchen, and it is easy to run out of seating when guests arrive. Thoughtful solutions such as a well-planned island, a sociable breakfast bar, or even hidden seating that can be brought out when needed help everyone feel relaxed and included. Christmas reminds us that kitchens are not only workspaces but central places for connection.

### 5. A Space Designed for Real Life & Special Occasions

Above all, Christmas highlights the need for kitchens that support the rhythm of everyday living as well as festive celebrations. Practical layouts, thoughtful lighting, and comfortable seating work together to create a room that feels warm and adaptable. When a kitchen performs beautifully during the busiest time of the year, it is a true sign of a well-considered design.

## We Are Here to Help with Your Festive Finishing Touches!

If you would like tailored guidance on improving your kitchen before the festive celebrations, our team is here to help. Whether you would like to adjust your cabinetry, add extra seating to maximise space, or simply receive expert advice on how to make your kitchen work better for Christmas, please contact us soon so we can assist before our Christmas closure. Call us on **01634 799 909** or email **[design@ream.co.uk](mailto:design@ream.co.uk)**. We would be delighted to help you get your home ready for the season!

*Scan here to visit  
Gillingham Showroom...*



# Inspiration Gallery

## A First Look at the Emerging Kitchen Trends Shaping 2026

2026

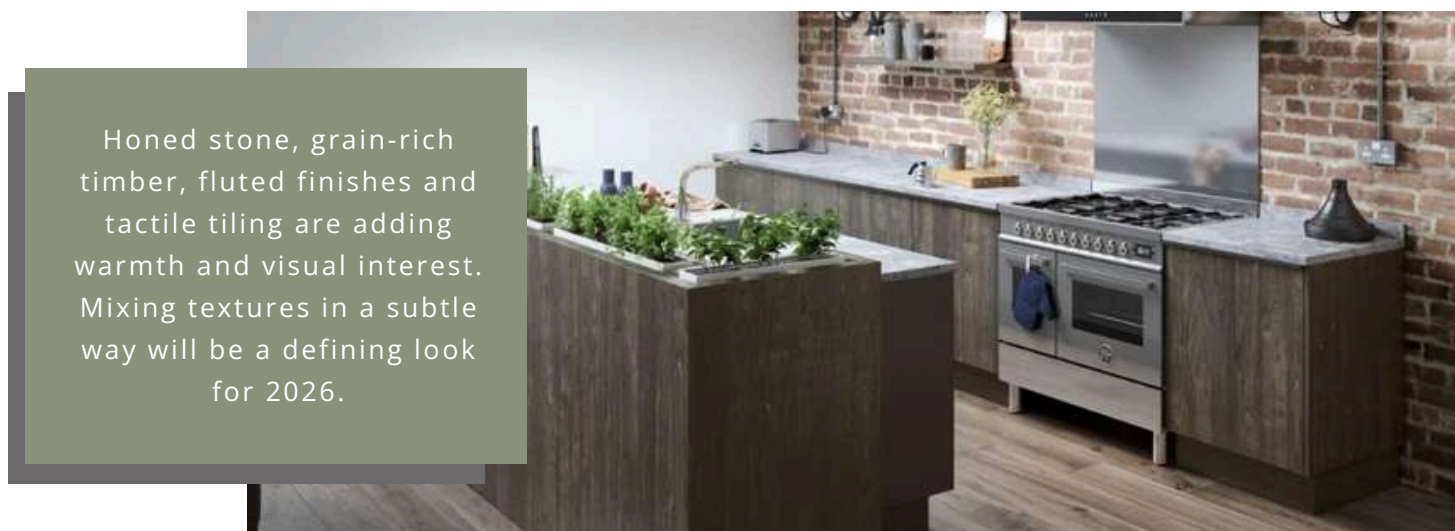
As we step into a new year, kitchen design is moving towards softer tones, natural textures and beautifully refined details that create calm, characterful spaces. Here are five key trends set to shape 2026 and inspire the next wave of contemporary interiors. If you would like to get ahead of the new design season and explore how these trends could work in your home, speak to one of our expert designers today by [clicking here](#) to contact us.

### 1. Warm Earth Tones



Soothing greens, clay shades and rich neutrals are becoming the new foundation of kitchen colour schemes. These grounded palettes bring comfort, depth and a sense of relaxed luxury.

### 2. Textural Natural Materials



Honed stone, grain-rich timber, fluted finishes and tactile tiling are adding warmth and visual interest. Mixing textures in a subtle way will be a defining look for 2026.

### 3. Blue Makes a Comeback



Blue is returning in gentler tones, offering a calm alternative to grey. These softer shades work beautifully with natural textures and warm metals.

### 4. Architectural Lines

Clean silhouettes, minimal joins and refined detailing are creating a more architectural feel in modern kitchens. This look combines simplicity with sophistication for a timeless finish.



### 5. Seamless Surfaces



Continuous worktops and matching splashbacks create a clean and streamlined look that feels modern and elegant while being easy to maintain.

Get in touch at [design@ream.co.uk](mailto:design@ream.co.uk) or call **01634 799 910** to start planning your dream kitchen. **Book** your free design consultation and quote today, and make your home the ultimate space for friendship and celebration.



# What Our Customers Say...

## Mr & Mrs Booth and their Hempstead Trendy Kitchen

Based from our Google Reviews ★★★★★



This stylish Hempstead kitchen brings together confident colour, modern detailing and a layout designed for effortless day-to-day living. The deep blue cabinetry creates a bold visual statement while the warm worktops and complementary lighting soften the space and add a sense of comfort. Carefully planned storage and sleek appliances ensure that the kitchen performs as beautifully as it looks.



Mr and Mrs Booth were delighted with the finished space and praised the team for their support and attention to detail throughout the process. Their new kitchen now serves as a central place for family life where cooking, hosting and relaxing all come together naturally.

**"Paul at Ream helped design our new kitchen. He was excellent from start to finish, very patient, accommodating and knew his trade well. We were so happy with the whole installation team. Ream remained in contact throughout the whole fit and checked we were happy during and at the end. The whole kitchen is of an excellent standard and quality. I couldn't recommend this company enough. Thank you, Ream!"**



# Cook it with **AEG**

## Christmas Leftover Buffet: Stuffing Muffins

- Prep time: 10 minutes
- Cooking time: 30 minutes (approximately)
- Servings: 4-6 people



The days after Christmas often mean a fridge full of leftovers, so this month we are sharing ways to turn them into something a little more exciting. AEG's stuffing muffins are simple, clever ideas that make festive favourites feel new again.

### *ingredients*

#### **For the batter:**

- 150g self-raising flour
- 1 tsp baking powder
- 1 tsp sea salt
- 1 tsp oregano
- 2 tbsp olive oil
- 1 tbsp apple cider vinegar
- 200g water
- Leftover stuffing
- Cooked chestnuts, chopped up
- 6 tbsp dried cranberries

### *directions*

- Preheat oven to 180°C.
- Firstly, make your batter by adding all the dry ingredients to a large bowl and mix to combine.
- Now add in the wet ingredients and mix well to combine.
- Line a muffin tin with cases—this makes 6.
- Spoon a little leftover stuffing into the base of each case and add a few cranberries and a sprinkle of cooked chopped chestnuts.
- Now spoon half the batter over to mostly cover the stuffing, cranberries, and chestnuts.
- Repeat by adding another layer of the stuffing, cranberries, and chestnuts and a layer of the batter.
- Sprinkle a few more cranberries over the top.
- Bake for approximately 22 minutes, then remove from the oven.



# Ex-Display Offers

Prices too good to miss!

Explore Our Stunning Ex-Display Products Ready for Installation at a Fraction of the Cost.

In response to the constantly changing market, we frequently update our in-store displays to showcase the latest trends and products. As a result, we're able to offer a diverse selection of ex-display items at significantly reduced prices compared to their full retail value.



## Crosswater Matt Black Tap

### Product details:

- Matt Black
- Mono mixer tap
- Hot & Cold Braided 500mm long Hoses Included
- Delivery available local to Medway

*More information can be found on our website.*

### Price

WAS: £220

**NOW: £100**

## Jacuzzi Aqua Soul Bath

### Product details:

- White
- Jacuzzi Bath 1900 x 900

*More information can be found on our website.*

### Price

WAS: £6500

**NOW: £2600**



## Elica Eliplane Extractor

### Product details:

- 80cm
- Stainless Steel

*More information can be found on our website.*

### Price

WAS: £150

**NOW: £100**





## Aqata Bifold Door & Side Panel Enclosure

### Product details:

- Chrome 8mm glass
- Tray not included
- Aqata 1000 Bifold Door & 800 side panel enclosure
- Chrome

*More information can be found on our website.*

### Price:

WAS: £2160

**NOW: £950**

## Aqata Sliding Door Enclosure

### Product details:

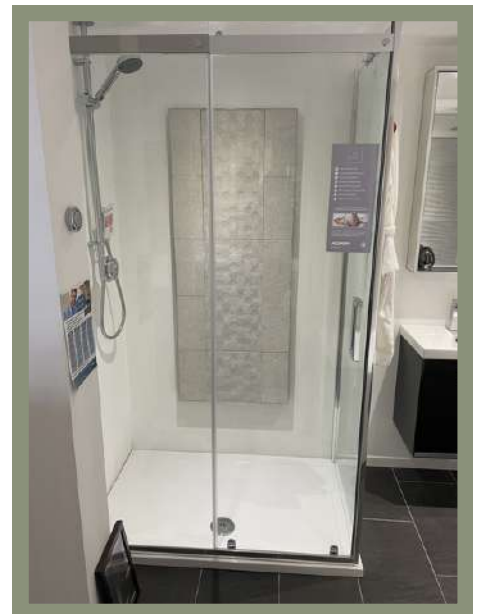
- LH corner 8mm Glass
- 1200 x 800 Shower Tray
- 1200 x 800 Sliding Door Enclosure

*More information can be found on our website.*

### Price

WAS: £2637

**NOW: £1200**



## Crosswater Artist Basin unit & Nepi Round Inset basin

### Product details:

- Crosswater Artist 600mm Basin unit
- Onyx Black with Solid Oak worktop and Oak legs.
- Handleless, soft Close Drawer.
- Nepi 400mm Round Inset basin – no overflow.
- Waste and tap not included

*More information can be found on our website.*

### Price

WAS: £2235

**NOW: £950**



# Meet The Ream Pets...

**Emma**  
Operations Director



## Meet Tia Maria!

Tia Maria is Emma's affectionate companion who loves to be nearby after a busy day. Whether she is curled up in her favourite spot or quietly watching from afar, she always brings warmth to Emma's routine and is a much-loved part of the Ream family.

Book your design appointment today! Our expert designers are here to bring your festive plans to life. Schedule your consultation and start creating the home you want to enjoy in the new year.

## *In January's Report...*

- Innovative ideas for transforming your cloakroom into a stylish, practical winter-ready space.
- Discover colour palettes set to inspire kitchens and interiors in 2026.
- A warming winter recipe from AEG.
- New Year's ex-display savings you won't want to miss.
- Meet more of the Ream Pets!

**AEG**

**Quooker®**

**BLANCO**

**BORA**

**caple**

**NEFF**



@Reaminteriors



Ream Interiors



Design@Ream.co.uk



@Reaminteriors